

ISSUE 7 · JULY 2023



THE ROAD TO HOPE

Official Newsletter of the Road to Hope Community Support Foundation

Presidential Words

Warm Greetings,

Let me begin by taking the opportunity to thank the firefighters for their efforts in protecting the forests and communities in our wonderful counties of Athabasca and Lac La Biche. The 2023 fire season has been a busy one, and without the efforts of all the fire departments it could have been a lot worse.

As we move into the Summer season and enjoy time traveling, camping, and spending time with family and friends, it's important to remember those in our area that are still battling cancer and in need of transportation support to their appointments. Our driving requirements are slowly increasing. If you have a desire to help out, signing up to drive is a great idea.

The Road to Hope Community Support Foundation continues to thank you for your support. We encourage you to inform your friends, family, and colleagues of the volunteering opportunities, donations, and transportation support that is available through Road to Hope.

We look forward to seeing you throughout the Summer and on the golf course at the 2023 Road to Hope Classic.

Sincerely,

Chris Hamlyn – President



This issue:

Presidential Words

PAGE 01

2023 Run For Hope

PAGE 02

Thank-you Sponsors & Volunteers

PAGE 03

13th Annual Golf Classic

PAGE 04

From the Community

PAGE 05

Get Involved with Road to Hope

PAGE 06

BEACH



2023 Run For Hope

A great big thank-you to everyone who came out on June 3rd to the Run for Hope! As always, it was a fantastic day full of great people and beautiful scenery.

We would like to thank Councillor Charlyn Moore for coming out and saying a few words with us prior to the start of the event, and Chris Newhook for hanging out and running our First Aid!

Thank-you to the Kinsmen Club of Lac La Biche, Smileys Furniture and the Lac La Biche Golf Club for the donation of prizes to our event!

Also, to thank-you to AlbertaParks for allowing us the use of the Island for this event even though there was construction. They also had a great display and booth set up for the duration of the event!

The birds of **Hope**
are everywhere.
Listen to them sing.

TERRI GUILLEMETS





Thank-you to our Sponsors and Volunteers

Platinum Sponsors

Edcon Power Tongs
Stingray Media
Britton's Independent Grocer

Diamond Sponsors

Lac La Biche County
North Country Co-op

Gold Sponsors

Your Dollar Store Lac La Biche
Kinette Club of Lac La Biche

Silver Sponsors

Lori A. Girard CPA
Edge Energy Logistics

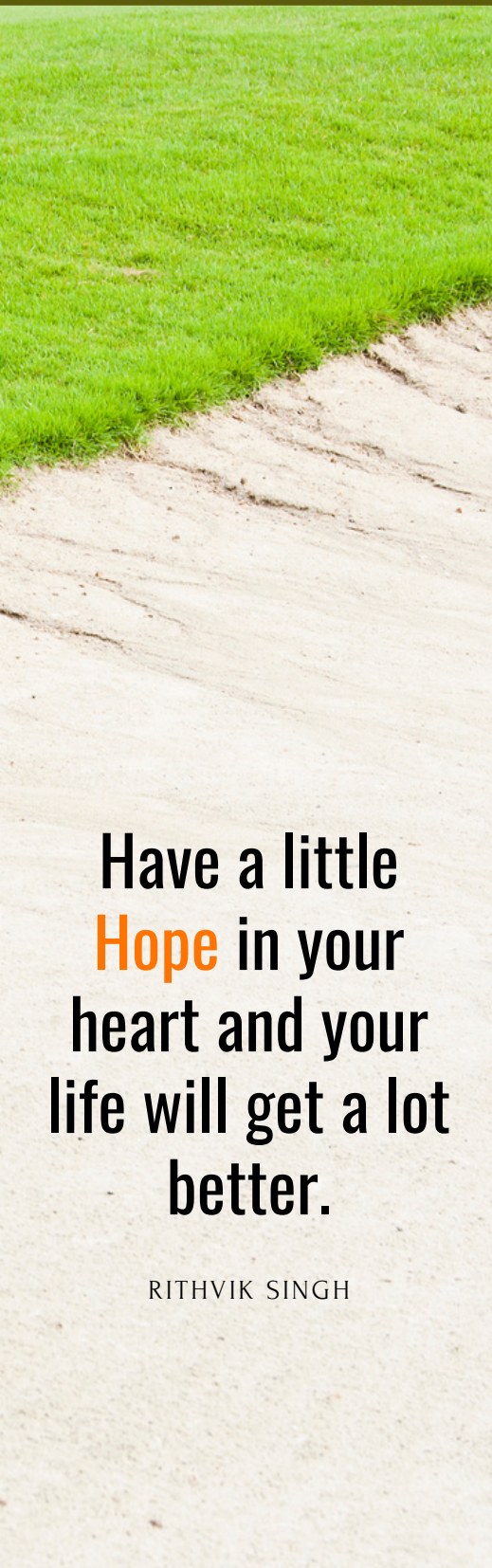
Bronze Sponsors

Bullseye HD Ltd.
360 Energy Liability Management
Lac La Biche Equipment Rentals
Piquette Insurance Services Ltd.

Volunteers

Bruce Adolf
Mike & Jessica Wallace
Andrew Padlewski
Del Day
Ramona Slade
Iva Moen
Reuban & Mary Coleman
Carson Rysdyk
Lyndi Mills
Nicole Rysdyk
Melinda Katona
Barb Greenwood
Chris Hamlyn
Chris Newhook
Latoia Charlton

“These events are a fundamental part of the continuation of the Road to Hope Community Support Foundation and they are impossible to hold without the help of both sponsors and volunteers. So to each and every one of you, business and individual alike, thank-you.”



Have a little
Hope in your
heart and your
life will get a lot
better.

RITHVIK SINGH

13th Annual Golf Classic

Every year we hold a Texas Scramble style golf tournament at the Athabasca Golf & Country Club. This year the date will be on Thursday, September 7th, 2023 and we hope to see you there!

We have multiple opportunities for you to get involved from Sponsorship & Participation to Volunteering. If neither of those things work for you or your company, we are always in need of prize donations for the event!

There are various contests throughout the day including:

Toonie Prize Draws

50/50

A Spin to Win Hole

Team Prize

Chipping and Putting Contests

Longest Drive, KP, Longest Putt, Shortest Drive all for both Men and Women!

If you would like more information on how you get get involved with the tournament, please get in touch with our Coordinator Jessica today!

780-327-9442 | coordinator@roadtohope.ca

Don't wait too long, we sold out quick last year for spots available!

Deadline is August 25th



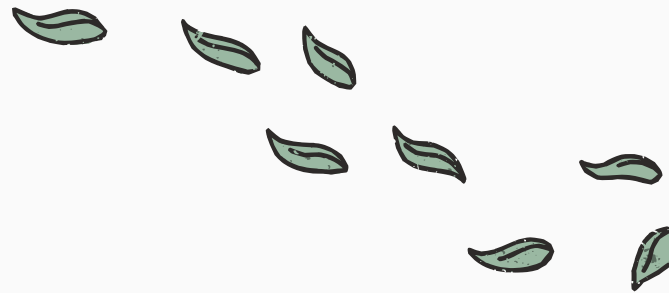


From the Community

Road to Hope was formed in 2008 with the amazing support of Alberta-Pacific Forest Industries Inc. As their Signature Charity we work together to make a difference for the local cancer patients and their families. We have AL-Pac team members working with us as well as retirees volunteering their time to the Foundation. We are blessed each year with a donation of \$25,000.00 and that goes towards the operating costs and reimbursements to our volunteer drivers for all of their trips. Thank-you so much for all that you do for us.



The Servus Credit Union in Lac La Biche has given us a \$150.00 donation that went towards the 2023 Run for Hope. Support from businesses such as Servus always mean so much to us and help us to do what we do. Thank-you so much for this kind donation!



In June I had the pleasure of meeting Helen Smith for coffee. She approached the Foundation wanting to make a donation in memory of her sister Diane Harrison. She is an incredible person, and she touched my life with her light. Thank-you Helen



Optimism is the
faith that leads to
achievement.
Nothing can be done
without **Hope** and
confidence.

HELEN KELLER



Get Involved with Road to Hope

Congratulations to our 2023/2024 Board of Directors and Executive!

Chris Hamlyn - President
Blair Norton - Vice President
Daniela Cameron - Treasurer
Mary Coleman - Secretary
Del Day - Director
Lyndi Mills - Director
Mike Wallace - Director
Rick Baksza - Director

If you or someone you know is dealing with Cancer and requires transportation assistance to their appointments, please contact our Coordinator Jessica at 780-327-9442 or coordinator@roadtohope.ca

Our clients are more than welcome to have a companion accompany them if that will help make the trip more comfortable, at no charge.

The trips may be for scans, doctor visits, treatments, picking up medications, so long as it is directly related to Cancer. The trips are at no charge to the client.

We are in need of drivers for the Boyle, Plamondon, and Lac La Biche areas. If you or someone you know is interested please get in touch with our Coordinator Jessica today. Our drivers are reimbursed at a rate set by the CRA.

We have ended this second quarter with just 14,995 KM driven. There were 43 trips and we are currently helping 12 clients get to their Cancer appointments. Thank-you to all of our driver's for their outstanding commitment to the Foundation and our clients.

Happy Summer

